

# The LYDDEN



Issue 551 November 2020



For the Parish of  
LYDDINGTON and WANBOROUGH

In the United Benefice of Lyddington, Wanborough, Bishopstone and Hinton Parva





## The beauty of wood without the hassle

This traditional timber look window range, manufactured from low maintenance PVCu, has a grained wood effect finish. Available in a wide range of colours, a combination of classic styling and modern materials makes it ideal for timber replacement in a conservation area.

- Reduce energy bills
- Six point high security locking
- Reduce condensation
- No painting
- Double or triple glazed
- 10 year insurance backed guarantee

Also available, composite doors with the look and strength of timber doors but with no maintenance. Top security clear locking systems fitted as standard.

For all your double glazing windows, doors and patio doors telephone us now for a free no obligation quote from a trusted company with over 20 years trading.

**FENSA**

Registered Company

DA Windows and Doors  
High St | Warrington

01793 790754



**Windows & Doors**



**Nationwide**  
PROPERTY LETTINGS

One of the longest established letting agents in the county who bring you experience with a modern approach & unrivalled property expertise and marketing knowledge.

Call Gary Sumner on 01793 513130



[www.nationwidepropertylettings.com](http://www.nationwidepropertylettings.com)

# Sell your Home

*for just*

**1%**

+VAT

Contact us today on 01793 641 641  
to arrange a free valuation!

**PRIMARY**  
Tel: 01793 641 641

**HOMES  
& LETTINGS**



*Your local family run business*

## Vicar's Letter

*Dear Friends and Neighbours,*

November has for many years been a month for remembering. Remembering loved ones who are no longer with us, and for remembering those who have laid down their lives for the freedoms that we enjoy today. Remembering can be helpful and it can be tough at times too. Remembering who we are and our purpose in life can also be a joy, and at other times it too can be tough.

We are made first and foremost to praise God, that three letter spelling of the word LOVE. Loving someone we think a lot of can be one of the most natural things we do in life and is why encouragement is more enjoyable than criticism. Because loving those who are dear to us can be a relatively easy thing to do, loving God is simply a matter of thanking the person that put our loved ones in our lives. It's then that Love becomes more recognisable, more obvious and everything else has a chance of getting into its proper perspective.

The church has struggled whenever people, both inside the church and outside of it, have put it on a pedestal. It has always fallen short, oftentimes people have mistaken church for God Himself. The fact that we make mistakes is something we all know about and is arguably the next most natural thing after breathing. It is for this reason that we are called to encourage rather than judge. "For all have sinned and fallen short of the Glory of God" (Romans 3:23). It is amazing the number of people that run off in judgement of another without being in full possession of all of the facts.

Jumping to conclusions is one of the quickest ways of jumping into error. Victims of abuse are often silenced if not silent. On the surface all appears well, if only to maintain some kind of peace in their otherwise troubled lives. We simply cannot know everything that goes on behind closed doors. Nor should we pry. Rather than battering others into who we think they should be, we do well to remember that God made us all, each wonderfully different, so as to enrich the world in which we live.

It is encouraging people, especially in their struggles, that enables them to be the best that they can be. In doing so we honour those who have given their yesterday for our today. VE Day and so many other commemorations are opportunities for us to appreciate each other and the freedoms that everyone should be allowed to enjoy. For all of this we give thanks, to the One Who gave it all.



*With best wishes and prayers,*

*Bill*

If you have anything that you would like our village prayer group to pray for please telephone 790088 or email [villageprayers@gmail.com](mailto:villageprayers@gmail.com)

## Church Services November 2020

These are the Church Services as planned at time of going to print, please look out for changes due to possible government restrictions related to the Coronavirus Pandemic.

<b>Sunday 1 November</b>	YouTube "A Little Liturgy for the 4th Sunday before Advent"	
	10.30am All Saints Patronal Festival	Hinton Parva
<b>Wednesday 4 November</b>	7.00pm Midweek Communion	Wanborough
<b>Sunday 8 November</b> Remembrance Sunday	10.45am	Bishopstone
	10.45am	Wanborough
	10.45am	Liddington
	10.45am	Hinton Parva
<b>Wednesday 11 November</b>	7.00pm Midweek Communion	Wanborough
<b>Sunday 15 November</b>	YouTube "A Little Liturgy for the 2nd Sunday before Advent"	
	10.30am	Wanborough
<b>Tuesday 17 November</b>	6.00pm	Bishopstone
<b>Wednesday 18 November</b>	7.00pm Midweek Communion	Wanborough
<b>Sunday 22 November</b>	YouTube "A Little Liturgy for the Sunday next before Advent"	
	10.30am	Hinton Parva
<b>Wednesday 18 November</b>	7.00pm Midweek Communion	Wanborough
<b>Sunday 29 November</b>	No Service	

## St. Andrew's Sunday School

Don't forget we plan to hold our first Sunday School sessions on Sunday 15 November and Sunday 13 December at 11.15am for an hour in the Church. All primary children and their parents welcome. We plan for our first two sessions to include Christmas activities with arts and crafts. Please come along and have some family fun.



## Liddington 100 Club

Dear members I have now received membership forms from 40 people so thank you , we still need a few more to allow us to give out £50 prizes each month . I will be making the first drawer first Monday in November.

Caroline Tams



## Farmers' Market

All being well, the next farmers' market will be on Saturday 21 November, 9am to midday in Wanborough Village Hall. Please wear face coverings, be prepared to give your name and contact number and observe social distancing. For more information contact Sue or David Birley on 01793 790438 or [sbirley@gn.apc.org](mailto:sbirley@gn.apc.org)

## Poppy Appeal 2020

Due to the Coronavirus Pandemic it will unfortunately not be possible to sell poppies door to door this year. However, Beryl Bell and Joan Kent are both happy to sell the 2020 poppy pin badges from their homes. Joan's address is Homelea, High St, Wanborough, Tel 790377; and Beryl is at Heathfield, High St, Wanborough, Tel 790376. Poppy pins are £2.50 each, please wear a mask when coming to buy. Like all charities the Poppy Appeal will be affected by the pandemic, so your support is greatly appreciated.

## Tennis Club Update

With the fine weather holding out, we have been able to make great use of the courts over the past few weeks, and it has been lovely to see all 4 courts in use at the same time. League play has restarted, and players are welcome to sign up.

The half price membership is now active (running from 1st October to 31st March 2021); joining fees and details are available on our website: <https://clubspark.lta.org.uk/WanboroughTennisClub/Membership/Join>. For anybody wishing to get back into playing tennis, there is a lovely rusty racquets group that plays tennis on Sunday afternoons and always welcomes paid-up club members.

Becky is holding ladies coaching on Monday afternoons and Cardio tennis 9-9.45am every Friday during term time. No previous tennis skills needed. Ladies tennis coaching cost is £5.50 (members) or £7.50 (non-members), and cardio cost is £5.00 (members) or £6.00 (non-members). Please contact Becky directly for more information.

## Wanborough Playgroup News

October has seen us mostly playing and exploring outdoors. Slugs, spiders, woodlice and squirrels have been very popular with all the children. The children have been developing their ball skills and are now mostly very competent when kicking, rolling and catching balls of different sizes. We have also been looking at prepositions and positional language and the children have had great fun putting themselves in different places such as on a bench, under a table, next, in front of and behind their friends. They are also starting to describe where they are in relation to a given person or object.

Our last week of the term was spent producing beautiful artwork to be sent away to make Christmas items such as cards, tags, wrapping paper and mugs. A bit early you might think but we need to place the order by the first week in November.

We had an unexpected visitor in our lovely PCO who spoke to the children over the fence about staying safe and what to do if they ever got lost.

Our term ended on 16<sup>th</sup> October. We are having a 2 week break in line with Wanborough Primary School and will restart on 2<sup>nd</sup> November. Fingers crossed for lots of dry weather so that we can continue to remain outdoors.

Looking ahead to next September we are very low in numbers. For us to plan ahead we would ask you to register your child in plenty of time. If you would like to register your child to start this academic year or anytime after that please email: [wanboroughplaygroup@hotmail.co.uk](mailto:wanboroughplaygroup@hotmail.co.uk) or message us via our facebook page @wanboroughpreschool. **Sarah Ingram, Playgroup Supervisor**

## Front Cover

The front cover picture this month was taken by Anita Basevi. A lovely shot of one of the new benches to commemorate the VE Day 75th Anniversary. The eagle eyed amongst you will have spotted some camera trickery - we have flipped the shot so the wording on the bench reads the right way round. Don't worry, we've not moved Liddington Hill!





## Wanborough Parish Council

Parish Council continue to hold all meetings virtually via Zoom. Residents are welcome to join, submit questions and listen to meetings. Please e-mail the Parish Clerk for the meeting ID and password if you wish to join.

The next meeting is due to be held on Monday 23 November at 7.15pm.

## Village Maintenance

We have installed a new bin next to the Church Road bus stop to replace the small yellow bin. Hopefully this will mean the bin will no longer overflow and, as the new bin has a cover, the rubbish cannot easily escape. Please make sure that village bins are not used for household rubbish they are only meant for litter and can also be used to dispose of dog poo bags.

As we enter the autumn months grass cutting around the public open spaces will cease. The handyman will be clearing leaves along pavements but only in locations where they are causing a hazard.

We carry out our own checks around the village to identify any maintenance that needs doing. However if there is anything that you feel needs urgent attention around the village, then please report any maintenance issues to the Parish Clerk by either e-mail [clerk@wanborough.info](mailto:clerk@wanborough.info), by using the "Maintenance Report" on the Parish website [www.wanborough.info](http://www.wanborough.info), or alternatively text, ring or WhatsApp on telephone number 07588 769829. Please do not use Facebook to identify maintenance issues as the Parish Clerk cannot keep track of these.

## Fly Tipping

A polite reminder to all residents not to dispose of garden shrubbery and grass cuttings outside the boundary of your own house. Throwing it over the back of your fence, leaving it along the edge of a public open space or unused piece of land is still classed as fly tipping and is not allowed. Please dispose of all garden waste in the proper manner by either using the "Green Bin" service from SBC or taking it to Swindon Recycling Centre. Many thanks for your co-operation.

## VE Day 75<sup>th</sup> Anniversary Benches



The second commemorative bench has now been installed on the corner of Church Road opposite Mayfield. Parish Council are aiming to improve this area by planting bulbs and wild flowers so that by spring you should notice an improvement.



## Minor Highways Improvements

Parish Council are pleased to confirm that, after nearly two years, two of the minor highways improvements put forward by Parish Council to SBC and the Ward Councillor are now being progressed forward as follows:-

1. Double yellow lines from the entrance to Southdown along Church Road and along the lane to St Andrew's Church.
2. Marking out a bus area next to the bus stop at Church Road (opposite the top of Kite Hill).

SBC have carried out an informal consultation with residents in Church Road and they have confirmed that they have received no objections to the proposed scheme.

This will now progress to the next stage where the scheme will be advertised and a formal consultation carried out.

Please look out on our Parish website for more details confirming when the consultation will commence.



Parish Council had also submitted a request for additional parking provision to be provided within Warneage Green to offset the loss of parking on Church Road, however SBC have confirmed that they are unable to progress this further due to the proposal being outside the scope of "minor highways improvements" and due to them not having enough resources. Obviously this is disappointing but Parish Council will continue to pursue this with SBC and consider other options.



## Hooper's Field Pavilion Expansion and Refurbishment – Draft plans consultation



Parish Council have been working with SWA Architects to compile draft plans for Hooper's Field sports facility.

We plan to display these plans at Hooper's Field pavilion on Sunday 15 November from 10am to 4pm for residents to "drop in" to view. Due to Covid-19 regulations there will be strict rules to follow: we will only be able to allow a maximum of 5 people in at a time, everyone must wear a mask, all must use the NHS Track & Trace QR code (or provide their details) and there will be a one-way system in place. Obviously this is subject to any change in Government guidance.

The draft plans will also be available to view on the Parish website from Monday 16 November along with a feedback form if you wish to submit any comments, with a deadline of Friday 18 December 2020.

### Brief Summary of the Project

Hooper's Field sports facility was opened in 1998. As time has passed and the clubs have expanded it has become in urgent need of expansion and refurbishment to:-

1. Become more financially viable
2. Allow the sports clubs to develop
3. To provide additional sporting facilities
4. To increase the size of the main hall to make it easier to hire out
5. To upgrade the kitchen to meet current regulations
6. To make it a multi-purpose facility

### Expansion proposal

The aim of Hooper's Field expansion proposal is to:-

1. Increase the size of the main hall to provide enough room for the hall to be used for fitness classes, and other hobbies and activities.
2. To relocate the kitchen to a more central point so that the facility can be used by multiple sports clubs at the same time, as well as being usable when the hall is hired out.
3. To improve the Bowls Club facilities for supporters to enable them to expand their club and hold larger bowling events.
4. To improve the facilities for the supporters of the football and cricket clubs.
5. To add floodlights to Courts 3 and 4 on the tennis courts to allow the club to have better usage of these two courts.
6. To add a new petanque area, introducing a new sport to the facility.
7. To improve the sports field in order to allow Wanborough JFC to use it as their main hub.
8. To add a parish office and meeting room.
9. To provide additional storage space for all clubs.
10. To improve the car parking area, improve site security and install low level lighting along the footpaths.

Please send in your comments to Parish Council by 18 December 2020

Parish Council can be contacted on 07588 769829 or e-mail [clerk@wanborough.info](mailto:clerk@wanborough.info). Please get in contact if you need help with anything.



## VE Day 75<sup>th</sup> Anniversary Display

Because the celebrations in May were cancelled and there was no display in the church, residents did not have an opportunity to share their artefacts and anecdotes, or to add to the story about Wanborough during WW2. At some point it may be possible to rearrange the display or alternatively to put all the information in a booklet, but we still need your stories.

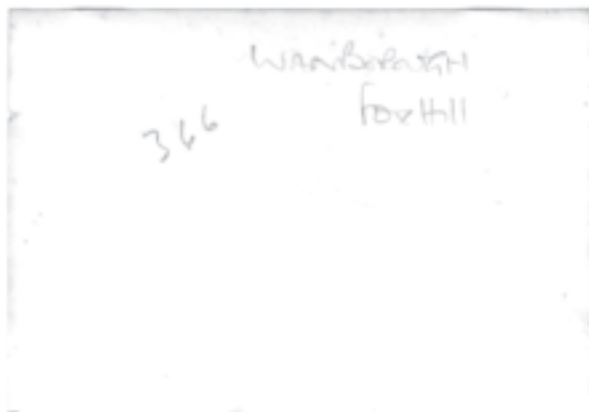
### The men from Wanborough who served

We know who served in Wanborough as Home Guards, ARP Wardens, etc and recent editions of the Lyden have carried stories of the five men who gave their lives and are remembered on the memorial in St Andrew's Church.

We believe that a further 85 men from the parish served their country and returned after the War, and we would like to tell some of their stories too. If you have any information please do get in touch, we would be happy to help with research and write-ups, just contact Linda Young at [linda.youngthree@gmail.com](mailto:linda.youngthree@gmail.com).

### A mystery aircraft in Wanborough

Documents about the RAF airfield near Foxhill do not mention an existing airfield prior to the RAF setting up a Relief Landing Ground there in 1941. However, Paul Williams has kindly provided this photograph from his collection which shows a de Havilland DH.85 Leopard Moth, on the reverse of which is written "Wanborough, Foxhill". The picture was taken by one of Paul's relatives who were visiting Hinton in the 1930s and it was taken during their walks around the villages, long before RAF took over. The picture also shows two other aircraft, possibly also Leopard Moths or perhaps its predecessor the DH.80 Puss Moth.



Production of the Leopard Moth started in mid-1933 and it carried two passengers sitting behind a central pilot. The aircraft in the picture was initially registered in France and re-registered in UK as G-ADBH in January 1935.

During the 1920's and 1930's private pleasure flying became popular with the rich and famous, especially with the formation of flying clubs. Was there a flying club at Foxhill?

From January 1935 until April 1936 the aircraft was privately owned by Lady Margaret Loch and then by Sir C Rose. When the picture was taken were they visiting King Edwards Place or someone nearby? From April 1936 the aircraft was owned by Birkett Air Services Ltd at Heston in Middlesex until private flying was prohibited in September 1939. Was it visiting Wanborough on a commercial flight?

The photo must have been taken between January 1935 and September 1939 so if you have any details about the airfield in 1930s which would explain why this aircraft was visiting Foxhill please email Dave Hayward [c1lrhayward@wanborough.info](mailto:c1lrhayward@wanborough.info).

## Ward Councillor Update from Gary Sumner

My next **Ward Councillor meetings** are scheduled to take place at Wanborough Village Hall, between 9-11 on Oct 31 and Nov 28 (check my website to be sure)!

As the Hall is a 'Covid secure' venue I will be able to allow up to 5 visitors in the hall. Please wear a mask! Ideally make an appointment to avoid waiting.

**Traffic Schemes:** The informal consultation on double yellow lines on part of Church Road completed with only one comment and no objections. A formal consultation next.

**Pack Hill potholes:** Following a residents visit to my Ward Surgery and some pictures shared, I contacted Highways Officers and requested an immediate inspection of 4 roads – the yellow lines appeared a day later and you'll have seen the resulting works.

**Wanborough Traffic Calming:** I will be going through the feedback with officers shortly before looking to incorporate relevant changes – I met some residents on site to get their feedback. I am keen to get this moving forward as the point of the scheme is to slow traffic and deter rat running via Wanborough.

**Wanborough Traffic Issues:** We have had some inconsiderate pavement parking in the High Street – a whole car blocking the pavement. The police have been given the photographs and will act.

**Parking outside School:** Again, some complaints that a minority of parents are parking in the white lined safety area at the entrance – school will remind parents.

**Wales and West** have been doing their works on the High Street section to Burycroft but will move by the time this is published to the High Street up to Callas Hill. They have been very proactive at communication and in Spring 2021 we are going to see the Highways works along Wanborough Road as part of the Redlands housing development – as well as the Southern Connector Road starting. We will all get used to traffic lights and some delays.

**Flooding:** The very heavy rain in the first week of October led to considerable flooding of the Wanborough Road, just at the entrance to Redlands – I've arranged for flood officers to meet on site as we have an idea about the cause. I have met residents in The Marsh also affected by flooding and others have sent me photos which are invaluable to flood planning as these are often short-lived incidents.

**Broadband:** Currently the Wanborough, Liddington and Chiseldon schemes are stuck with the Government department awaiting approval of the overall budgets. Robert Buckland and I have a meeting with senior BT Openreach colleagues to discuss how we accelerate progress on 6<sup>th</sup> November. With so many residents likely to work more at home we desperately need a reliable service. There are currently no reliable alternatives and improvements in the 4G Broadband have not made a great difference.

**Please call me on 790814 or email [gary@ridgewayvillages.co.uk](mailto:gary@ridgewayvillages.co.uk)**

Get Wanborough, Liddington, Bishopstone, Hinton Parva and Badbury news on the Ridgeway Ward website: [www.ridgewayvillages.co.uk](http://www.ridgewayvillages.co.uk)



## **Liddington Parish Council**



### **Hedges**

The Parish Council would like to remind all residents that if your property has shrubs or hedges alongside pavements or public footpaths please take time to ensure that they are kept trimmed well back so that users have clear paths to walk on and don't have to come face to face with branches or have the need to step out into the road. This advice also applies to overgrown hedges/shrubs or trees from within your property boundary that may result in cars, buses and delivery vans having to drive in the middle of the road. It is your responsibility not to cause a nuisance. Thank you.

### **Playing Field and Dogs**

The Parish Council has received several complaints regarding the amount of dog poo being left on the field and around the children's play area. Please clean up after your dog. It is both irresponsible and an offence that could lead to a maximum fine of £1,000.

### **Parish Council Meetings**

Unfortunately due to the continuing fight against the pandemic and based on advice from the National Association of Local Councils and the Department for Housing, Communities and Local Government, it was not possible to hold the face to face meeting that was planned for October. It seems likely that the need to hold meetings virtually will carry on for some time to come. If you would like to join a meeting to watch and listen to the proceedings, the Zoom joining details will be included on the agenda. Alternatively any comments or questions can be sent to the Clerk, [parishclerk@liddington.org](mailto:parishclerk@liddington.org) or telephone 07989 647438. Any points raised in this way will be answered in writing and in the minutes.

The next meeting of the Parish Council will be held on Wednesday 4 November 2020 at 7pm.

**Val Curtis, Clerk to Liddington Parish Council**

### **Liddington Village Hall AGM**

The Annual General Meeting for Liddington Village Hall will be held on Monday 23rd November at 7pm. This will be a virtual meeting. All village residents are welcome to attend the virtual meeting. If you would like to attend, or if you would like to ask a question during the public session, please email Alison Babington Secretary at [ababington@btinternet.com](mailto:ababington@btinternet.com) and you will be sent an invitation and agenda by email before the meeting starts.

### **Light Relief for These Covid Times**

For our enjoyment Liddington Parish Council have revived the ancient game of Hunt the Horse Ring

Back in the 1800s, when the Parish was run for the benefit of the Parishioners, a new school was built for Village children. As this was before the invention of the two horse-power internal combustion engine, the children would arrive on foot or on horseback.

The foresighted parishioners decided that the school needed a ring to which a horse could be tethered. They hunted high and low for a suitable ring and eventually found a local blacksmith who could make one. The schoolmaster was delighted as now his horse would not run away whilst he was teaching the children.

In the 1990s the game of Hunt the Horse Ring was resurrected. The good people of Liddington raised a pile of money and hunted for the original Horse Ring in the debris of the old school. The winner claimed his prize and proudly placed the Horse Ring prominently on the front of the new Village Hall.

Fast forward to 2020 and our Parish Council have started a new version of Hunt the Horse Ring. It is now well hidden on the Hall and the game of Hunt the Horse Ring is now on. Who will be first to find the Ring?

The answer will be given next month, and you may find it shocking!

Straight from the Horse's Mouth.



## 5 Cleaning hacks...have a spruce up before Christmas

### 1. Cleaning the glass on your wood burner

Use crumpled up newspaper, dip it in water and then some residual ash. Scrub gently until the glass clears, wipe with a damp cloth to remove remaining residue. Take care not to scratch the glass with bits of the ash.

### 2. Tackle the mouldy grout

Sick of mould building up in the corner of the shower or bath tubs. Buy a large pack of cotton wool and a bottle of bleach. With gloves on soak the cotton wool with some bleach and line the edges of the shower/bath, covering the mould, leave to soak for 12 hours and then dispose of the cotton wool safely and rinse the area.

### 3. Dusty blinds

Dampen an old sock with water, apply over your hand and run it between the slats, disposing of the sock afterwards.

### 4. Zoflora to eliminate odours

Zoflora is a cleaning product used to kill bacteria and eliminate odours but offers a scent for all, with lots of different cleaning uses and hacks. Diluted in a washing up bowl with hot water overnight can make your kitchen smell amazing in the morning.

### 5. Time to declutter

It's not just kids' toys that need a good old declutter at this time of year. Food cupboards, fridges and freezers probably all need a once over too, and remember there are Food Bank points in most supermarkets to recycle any unwanted food goods too, small acts of kindness **really** do help individuals and families in need.



## The end of an iconic building in Wanborough

Sadly, in September 2020, time was finally called on "The Ship Inn", latterly known as "The Ropers". This iconic building, located on Church Road, opposite the top of Kite Hill, has stood for many decades amongst the many older houses within the Upper Wanborough Conservation Area. Originally one of the 14 public houses that the village has sported, it has led a varied life. Over the years the building changed both in look and use. Losing its thatch to an asbestos roof, the upper storey chalk walls to modern concrete blocks, the original windows changed to modern alternatives and the application of render to the outside, all contributed to it not being listed back in the 1960s. Fortunately, the garage next to it has been saved and will be renovated.

For more information about the history of this building please visit the History section on [www.wanborough.info](http://www.wanborough.info)

## News from the Protected Verge

The exceptional weather this year has had a detrimental effect on the wildflowers we usually see growing along the protected verge. In particular the annuals were not as prolific as they have been in the past. The very warm weather we experienced at the start of lockdown brought many of the annual flowers into leaf early, some more than a month earlier than usual. It was a sad day when we noticed the Yellow Vetchling plants catch the frost and die, weeks before it should have even been in leaf. All was not lost; we noticed a small patch of plants surviving in the long grass. We managed to collect some of the seeds from these plants to reseed for next year. Fingers crossed!

The plant experts working with both Swindon Borough Council and Wiltshire County Council have previously advised that the verge should have one cut in the Autumn. The cuttings should be left to lie for a period and then removed. Leaving the cuttings to dry allows any flower seeds to drop. Removing the cuttings means the soil does not get too rich for the plants that grow there. Having put a call out on Facebook for help, this October a small group of us, and a few passers-by, undertook a litter pick, rake up and the first every treading in ceremony.

We worked along the verge in between the 2 protected verge signs, so plenty of space to stay socially distanced. By raking up the cuttings we helped to spread the seeds that had fallen from the plants that usually grow there. Treading the seeds in, which meant walking along the verge, helps to push the seeds into the soil so that they will grow next year. All the grass cuttings we gathered were scattered under the Horse Chestnut tree so that the birds can use the material for insulating their nests through the winter and any remaining seeds will spread out on the wind.



For the first time, since I started litter picking this area, we only collected one black bin bag of rubbish and it was mainly aluminium cans. I know others pick litter along this road and my thanks go to them all for helping to keep the litter left lying around to a minimum.

A big thank you also goes to those helpers that spared their time, 1.5 hours on a Sunday morning, to help. A great morning was had by all. We also got to spot Burt, the Corn Bunting, and enjoy watching his babies playing in the field opposite.

If you are interested in knowing more about the verge monitor role, please get in touch, the more that help the better it will be. **Anita Basevi** Anitabase6@gmail.com

## The Joke Box

### A little light humour to cheer you up

- ◇ There is talk of trying to get a community led wind farm off the ground locally, is anyone out there a big fan?
- ◇ VACANCY - The local cycling club is looking for a new spokesperson.
- ◇ 'Keeping Up with Tech' courses will soon start running in the village hall. For those who cannot attend, the course materials are available on VHS or floppy disc.
- ◇ Apparently next week is Cultural Appropriation Hair Week.....I'm dreading it!
- ◇ Buddhists never have anaesthetic when they visit the dentist, they like to transcend dental medication!

Keep smiling all! The Village Joker



**RICHARD GRIFFITHS**  
**Dovetail Building Ltd**

Extensions - Loft Conversions  
 Conservatories - Roof Tiling & repairs  
 Blockpaving - Patios - Decking  
 All types of Carpentry & made to measure Joinery  
 Fully fitted Kitchens & Bathrooms  
 Hardwood flooring - Ceramic Tiling  
 Structural Alterations - Plastering

 [dovetail\\_building](#)   
 REFERENCES AVAILABLE

**Iris Cottage Lower Wanborough**  
**Tel: 791581 / 07768 448 666**  
 Email: [richgriffiths@rocketmail.com](mailto:richgriffiths@rocketmail.com)  
 Third Generation Building Company

**FF Floors Floored**  
 Specialists In All Aspects Of Floor Covering  
 From Luxurious Carpets To Hardwearing Economy  
 Beautiful Real Wood To Standard Laminates  
 Stone Tiles To Ceramics

**We also Supply & Fit Underfloor Heating**  
 Please Call For Help And Advice  
 01793 791581 Mobile 07768448666

**M J SMITH**  
**PLASTERING**  
**SERVICES**  
**CHURCH ROAD WANBOROUGH**

- FRESHEN UP OLD WALLS AND CEILINGS FOR DECORATION
- RE-PLASTER DATED ARTEX AND CEILINGS.
- EXTERNAL RENDER AND FLOOR SCREEDING
- INSURANCE WORK UNDERTAKEN
- ALL WORKS GUARANTEED

**25 years experience**  
**01793 791042**  
**07764 968525**  
[Marlonsmith@sky.com](mailto:Marlonsmith@sky.com)

**Chimserv**  
[www.chimserv.com](http://www.chimserv.com)



Wood burning stove supply & installation  
 Chimney lining & sweeping  
 Fireplace design & build  
 Cows, pots & birdguards



All types of building work &  
 property maintenance undertaken

**07860916790 or 01793 491011**  
[info@chimserv.com](mailto:info@chimserv.com)

**PLUMBING & HEATING**  
**FRANCIS ANDREW**





Central Heating Installation & Repairs  
 Boiler Installation & Repairs  
 Landlord Certificates  
 Bathroom & Kitchen Installations  
 All domestic Plumbing

**No call out charges**  
**Free estimates**  
**24hr service**

Fully Qualified & Insured

Mob: 07720 245333  
 Home: 01793 791542  
 Email: [faplumbing@hotmail.com](mailto:faplumbing@hotmail.com)





# HERITAGE TREE CARE

Professional Tree Surgeons

**Comprehensive Service  
Qualified Staff  
Fully Insured**

- ✓ Pruning and Shaping
- ✓ Felling and Removal
- ✓ Hedge Cutting
- ✓ Stump Grinding
- ✓ Tree Planting

Free quotations and advice  
Call Ian Walding (N.C.Hort / N.D.Arb)

**01793 790210**

email: [ian@heritage-treecare.co.uk](mailto:ian@heritage-treecare.co.uk)

[www.heritage-treecare.co.uk](http://www.heritage-treecare.co.uk)



**Sugarcraft  
and  
Cake  
Decorating  
Supplies**

1 Hilliers Yard, Marlborough SN8 1BE  
01672 288080

## **Write Learn Tutoring** English Tuition

Heather Hawkins  
Dip Classical Studies, BA, MA, MTA

- Enthusiastic, dedicated one to one English tuition
- KS1 - Undergraduate
- SEN welcome
- Individually planned lessons
- DBS enhanced checked
- Competitive rates

Tel: 07876763795 email: [heatherhawkins@btinternet.com](mailto:heatherhawkins@btinternet.com)

# ROB SPURR

## Planning & Design Consultant

Architectural plans drawn for extensions,  
conversions and internal remodelling.

I deal with all aspects of planning applications  
and building regulations, Listed Buildings and  
Conservation Area consents.

3D bathroom designs and specifications.

Rob Spurr trading as Sun Design & Consultancy Ltd

Southview, 22 Ham Road, Wanborough  
Email: [robspurr@btconnect.com](mailto:robspurr@btconnect.com)  
Tel: 01793 790381  
Mob: 07786 933460

## mark jerome painter & decorator

All types of interior and exterior decorating  
using the latest in dust free technology

Transform your solid wood kitchen with paint  
using the best hardwearing paint finishes  
available

"Thanks for a fantastic job!"  
Debbie Moxon, Baydon Post Office

**01793 790307**

High St, Wanborough



**Matthew Brittain**  
Chiropractor

Visit: [www.backandactivecare.co.uk](http://www.backandactivecare.co.uk)

Email: [Matthew@backandactivecare.co.uk](mailto:Matthew@backandactivecare.co.uk)

**Call: 07480 762885**

**Back & Active Care**

Emoyeni, Kite Hill, Wanborough, Swindon SN4 0DD



**Rachel Payne**  
Professional Hair Salon

- \* Cuts, Styling, Colouring
- \* Olaplex, Moroccan Oil, Schwarzkopf
- \* Self contained salon in Bishopstone
- \* Fully Covid Secure

**07527 607947**

**10% off all services in November**



**Nicola Cook**  
Clinical & Medical  
Hypnotherapist  
Hypnobirthing Teacher

07578 591577  
[nicoladawn78@icloud.com](mailto:nicoladawn78@icloud.com)  
[www.nicolacookhypnotherapy.com](http://www.nicolacookhypnotherapy.com)

Appointments available in Wanborough, Lechlade and online

**Advertise here  
for £80 per year**

[lydenadvertising@gmail.com](mailto:lydenadvertising@gmail.com)

XXXXXXXXXXXXXXXXXXXXXXXXXXXXXXXXXXXX

**Mobile Hairdresser**

Working from home or mobile to yours

Introductory prices

**Contact Denise on 07902865910**

XXXXXXXXXXXXXXXXXXXXXXXXXXXXXXXXXXXX

**HB'S BEAUTY**

Hannah Thoburn  
BEAUTICIAN

**Call: 07789 005121**

[Hannah\\_thoburn@icloud.com](mailto:Hannah_thoburn@icloud.com)  
The Verne, The Marsh, Wanborough, SN4 0AR

**HOW DO YOU FEEL?**

.....

Tired all the time?  
Struggling with your Hormones?  
Low Mood?  
Digestive Problems?  
Want to strengthen your Immune System?

.....

**I Can Help You**

I work with clients to help them improve their health, re-balance, live a full and more vibrant life and stay healthy.

Please call to arrange a complimentary initial consultation.

—

Trudi Wagner.  
[trudi@trudiswellnesshub.co.uk](mailto:trudi@trudiswellnesshub.co.uk)  
07771 236 165

[www.trudiswellnesshub.co.uk](http://www.trudiswellnesshub.co.uk)





# Woodfix

Kitchens, bathrooms and carpentry

Quality Kitchens & Bathrooms  
supplied and fitted

Bespoke Built-In Cupboards,  
Shelving and Worktops

All types of Flooring,  
Replacement Doors & Loft Ladders

**01793 790752**

woodfix@btinternet.com

www.woodfix.co.uk

A local family run business  
20 years experience  
Expert advice & design and  
Project management  
**CALL US FOR A FREE QUOTE**



## James's Landscaping and Gardening Services

\*Grass Cutting \*Hedge Trimming  
\*Small Trees \*Garden Maintenance  
\*Clearances

Hard Landscaping-  
Various Including \*Fencing  
\*Gates \*Paths \*Paving \*Sheds

Locally based in Wanborough.  
For quotations, bookings or  
information- please telephone  
James Robb 07863 599991

## **Barrett Accounting and Tax Services**

Chartered Accountants

Chartered Tax Advisers



LIMITED COMPANIES,  
UNINCORPORATED  
BUSINESSES AND  
INDIVIDUALS

ACCOUNTS  
BOOK-KEEPING  
TAX RETURNS  
PAYE + PAYROLL  
VAT + TAX ADVICE

If you want service that gives  
value for money, whilst being  
professional and efficient,  
contact us on

01793 741250 or  
mail@barrett-ats.co.uk

## **Pilates Classes**

**Millbrook Primary School, Freshbrook**  
Monday 6 - 7pm

**Hooper's Field Pavilion, Wanborough**  
Tuesday 6.30 - 7.30pm

**St Paul's Church Centre, Covingham**  
Thursday 6.30 - 7.30pm & 7.40 - 8.40pm

**Christ Church Community Centre, Old Town**  
Friday 2 - 3pm

Interested? Contact Sonia Jones on  
☎ 01793 791386

✉ pilates@sonia-jones.com

🌐 www.sonia-jones.com

Please visit my website for other venues and services

## **PC Doctor Dan**

115 High Street, Cricklade  
Tel: 01793 759192 Mob: 07890 377517

### **Home & Business Computing**

- ✓ Free pick-up and drop-off service
- ✓ Purchasing advice, setup and installation
- ✓ Secure wireless and home networking
- ✓ Share files, photos, music and printers
- ✓ Virus and spyware detection and removal
- ✓ Training to meet your specific needs
- ✓ Hardware/ software repairs and upgrades
- ✓ Improve PC performance and reliability
- ✓ Create backups to protect key information
- ✓ Consultancy and managed service options

20 years IT experience @Intel Corporation

**www.pcdotor-dan.co.uk**



# Sparkle & Shine

Established fully insured cleaners

Available for:

Weekly, Fortnightly or Monthly cleans  
Seasonal Spring cleaning or  
End of Tenancy cleans

Please call or email to discuss your  
requirements & obtain a free quote

sparkleyourhome@icloud.com

07935543158



## RABBIT HILL PROOFREADING

Maria Hawkins LLB

Society for Editors & Proofreaders Entry Level Member

**Providing a professional finish to your document**

- Work undertaken on any kind of document on paper or electronically
- Checking for all errors in grammar, spelling, layout and presentation

• Competitive rates

Tel: 07592 392214

Email: mariahawkins@btinternet.com

## Maths Tuition GCSE & A Level

- Qualified Maths Teacher
- GCSE exam marker
- Over 20 years teaching experience
- 1:1 lessons
- Revision lessons
- Flexible hours
- Based in Wanborough

$\div$   $\infty$   $\Sigma$

$\int$   $\pi$   $\sqrt{\quad}$

$\geq$   $\times$   $+$

Helen James BSc(Hons) PGCE MA

Email: helenmjames11@gmail.com Tel: 07776 309633

www.helenjamesmaths.co.uk



TAKE ONE  
TAKE ONE

## Video Photography Audio Cine

### Video Transfers

VHS - Camera Tape / Cards - DVD

### Cine Film Conversions

Standard/Super 8 - 16mm

### Slide Negative Scanning

35mm - 120 format - slideshow creation

### Audio Conversions

Cassette Tape - Open Reel - Mini Disc - CD

### Event Filming - Creative Editing

Web Video Films - DVD Production

Providing professional services  
in Wanborough since 1998

Tel: 01793 790842

ian@takeonestudio.co.uk

Visit our showroom at  
14 Lotmead Business Village, Wanborough

## CHRISTOPHER LAWRENCE DESIGNS

Quality Craftsmanship &  
Expert, Innovative Design



We design, sell and install kitchens  
manufactured in Great Britain and  
have three innovative showrooms

*We also supply a wide range of small and  
large appliances, cabinets, doors, handles,  
lighting, plinths, worktops, taps, flooring,  
radiators, splashbacks, pop-up and USB  
sockets, as well as wet room and bathroom  
fixtures and fittings. We sell direct and can  
supply/deliver only or supply and install  
any of the above products.*



Best of Houzz Awards 2018 & 2019 for  
Highest Levels of Customer Satisfaction.  
Read more reviews: <https://bit.ly/2smlyO>

Office: 01793 790108 Mobile: 07930 699500  
[info@chrisltdesigns.co.uk](mailto:info@chrisltdesigns.co.uk) [www.chrisltdesigns.co.uk](http://www.chrisltdesigns.co.uk)



## Cat Care & Services

If you need help caring for your pet or are away from home and don't  
want the stress of the cattery 'Cat Care & Services' will meet you and  
your pet's needs

### Our Visits will include:

- Lots of socialising, play
- Lap time and attention for your pet
- Swindon and surrounding areas
- £10 per visit, (visits are 1 hour)



Cat Care & Services



Helen Spring: 0777 0767 916

## BAYDON MOWERS

*Garden Machinery Specialists*

- New Machines
- Servicing & Repairs
- Collection & Delivery for ride-ons
- Spare Parts
- Welding & Brewing gases

Mon - Thurs 9am - 5.30pm

Fri 9am - 5pm

Saturday 9am - 1pm

Unit 1 Skylarks | Bytham Road  
Ogbourne St George | Marlborough  
Wiltshire SN8 1TD

**WE HAVE  
MOVED!**

**01672  
841207**

richard  
james

**incentivised.com**

Local Agents with Local Knowledge  
Our people make the difference...

"Living in Wanborough puts me in a unique  
position when it comes to selling the benefits  
of the parish  
to any potential buyers. I have worked in the  
local area for over 16 years and specialise  
in the sale of village and country homes  
between Swindon, Marlborough and Devizes."

Ross Sutton  
Director



Contact your local agent today on  
01793 814542 or 07889 366130  
[ross@richardjames.info](mailto:ross@richardjames.info)



## Crete - the gift that keeps on giving

Travel journalists are not going far at the moment but that hasn't stopped them sharing their stories, and love of Greece. From a return to Crete and the 'poetry' of Corfu to the foodie heaven of Kefalonia and Zante's magical beaches we hope you enjoy the expert observations of our favourite islands to inspire your next journeys.

It makes me chuckle when I hear people say they've 'done' a particular place. After all, changes in personal circumstances, time of year or just the company you keep can make a return visit to any destination a fresh experience.

And so it is with Crete. I've been visiting this, the largest of the Greek islands, for decades. Yet it remains the gift that keeps on giving. Thanks to its location in the Southern part of the Aegean, Crete has the longest summer in Greece and is now emerging as a winter resort too. Blazing sunshine in December? Absolutely. Biking through deserted resorts one Christmas Day, face bathed in warm mellow light lingers in the mind as a standout memory.

I first came to Greece as a student 30 years ago. Back then my boyfriend (now husband!) and I based ourselves in Rethymnon on the north coast.

Crammed with well-preserved ancient buildings, the charming tavern-lined harbour is overlooked by a star-shaped, 16th-century citadel. If you want somewhere that offers a snapshot of some of the historical riches the island can offer, this is a place to visit. Though given that Crete has been occupied by invaders such as the Romans, Ottomans and Venetians you'll find vestiges of the past everywhere.

Of course you can spend lazy days on one of the island's sun-drenched beaches. What's more, rich Cretan agriculture offers fresh food in abundance – golden olive oil harvested from local groves, aromatic herbs, juicy tomatoes the size of footballs and salty cheeses (my particular undoing is Sarikopitakia – triangular feta cheese pies).



But for the restless traveller there are so many options.

One favourite is Chania, a city on the northwest coast. Known for its 14th-century Venetian harbour and 16th century lighthouse, I love ambling through narrow streets, dawdling at waterfront restaurants. Or visit Knossos, a sprawling Bronze Age archaeological site the size of a couple of football fields. In the still air, you can feel the past lingering around you.

Meanwhile, fans of Victoria Hislop's bestselling historical novel *The Island* must head to Spinalonga (10 minutes by boat from the village of Plaka), which was famously a leper colony for much of the 20th Century. Walking those ghostly streets is a sad but strangely serene experience.

Otherwise, go trekking, biking. Or just explore the island by car – I particularly love to drive through stunning Therisso Gorge where mountain goats have even less road sense than tourists in hire cars.

And of course, there are wonderful places to stay – not least, as we did on our last trip, the St Nicolas Bay, a five star hotel with the authentic feel of an unspoiled stone-built Cretan village.

So please *do* Crete. I can promise you, though, you'll never be *done*.

For your next getaway please do contact me Judi Moore on 01793 791238 or [judi.moore@thepersonaltravelagents.co.uk](mailto:judi.moore@thepersonaltravelagents.co.uk)





## St. Andrew's Church Wanborough

The Church is currently offering limited services, we will resume printing cleaning details and Sidespersons' roster etc when normal patterns resume.



*There are Books of Remembrance in All Saints', Liddington and St. Andrew's, Wanborough. If anyone wishes to have a name recorded there, please contact a Churchwarden.*

Please be aware that advertisers book annually, and the ads in this issue are their standard artwork - many advertisers may be working in a limited manner. I am sure local businesses will not mind you calling to check if they are able to help you at the current time, and if they can, will appreciate the business.

**Copy date for the Lyden is 14th of the month prior to publication**

### Privacy Statement

1.The Lyden Magazine needs to keep a small amount of personal data about its subscribers to enable the correct delivery and renewal of subscriptions. 2.We will collect, store, use, amend, share, destroy or delete personal data only in ways which protect people's privacy and comply with the General Data Protection Regulation (GDPR) and other relevant legislation. 3. We will only collect the following information: Name and Address for delivery 4. We will provide individuals with details of the data we have about them or amend or delete when requested by the relevant individual.4 We will keep all personal data secure. 5.We will not share any personal data with third parties or individuals outside of the Lyden distribution team.

## Wanborough Playgroup

### Village Pre-School

- Early Years Foundation Stage Curriculum delivered by friendly and qualified staff in a stimulating environment in a large hall with good sized secure garden.
  - Registered with Ofsted to take children from 2 years old
- Registered to receive Universal 15 hour and Extended 15 hours funding
  - Playgroup hours: Monday-Friday 9.00-13.00, Optional 08.45 start

**ALL SESSIONS ARE TERM TIME ONLY AND SUBJECT TO AVAILABILITY**

Village Hall, High Street, Wanborough, SN4 0AD Telephone: 07444 352687  
e-mail: wanboroughplaygroup@hotmail.co.uk

Website: [www.wanboroughplaygroup.org.uk](http://www.wanboroughplaygroup.org.uk) Facebook: @wanboroughpreschool



Registered Ofsted Number

109096

Registered Charity Number:

1026150



## CONTACT DETAILS FOR LOCAL ORGANISATIONS

### BENEFICE

#### Vicar

Rev. Bill O'Connell T:791359 E:villagevicar@hotmail.co.uk

#### Captain of Wanborough and Liddington Bellringers

Tony Pullan T :790904

Practice 1st, 3rd and 5th Fridays Wanborough, 2nd and 4th Fridays Liddington

#### Liddington 100 Club

Caroline Tams T: 07876 714950 E: ctams1@icloud.com

#### St Andrew's Flower Club

Chair: Kay Cullimore Tel 790458

Treasurer: Jackie Midwinter Tel 950852

Secretary: Alison Carse 790858

### WANBOROUGH PARISH COUNCIL

**Chairman:** Bob Biggs, Wanborough Herb Nursery, Tel: 01793 790327

E: cllrbiggs@wanborough.info

**Vice Chairman:** Roger Whitfield, 2 Manor Orchard, 791820

E: cllrwhitfield@wanborough.info

**Clerk:** Angela Raymond, Tel: 07588 769829

E: clerk@wanborough.info

### LIDDINGTON PARISH COUNCIL

**Chairman:** David Lomax, 38 Purley Road, Liddington. Telephone 01793 790440 / 07931 895044

**Vice Chairman:** Adrian Moore, Medbourne House, Medbourne Lane, Liddington. Telephone 01793 790391

**Clerk:** Val Curtis, 4 Mallard Close, Swindon, SN3 5JQ, T: 01793 530818

M: 07989 647438 E: parishclerk@liddington.org

### BOROUGH COUNCILLOR

Gary Sumner, Blenheim, Kite Hill, Wanborough, SN4 0AW

T:790814 E:gary@ridgewayvillages.co.uk

### WANBOROUGH PRIMARY SCHOOL

**Headteacher:** Andrew Drury, Tel: 790269

**Clerk to the Governing Body:** Lana Tilley Tel: 790269

**PTA : Chair:** Guy Simmonds c/o Wanborough Primary School,

E: contactpta@wanboroughprimary.org

www.wanboroughprimary.org

### BEAVERS/CUBS/SCOUTS

**Group Scout Leader:** Tessa Lanstein, Tel: 07795 057420

(Waiting lists are in operation so please make early contact)

Boys and Girls aged 6-8 / 8-10½ / 10½ -14 meet weekly in term time.

### WANBOROUGH VETS CYCLING

**Secretary:** David Halfhead, Tel: 790852

### WANBOROUGH JUNIOR FOOTBALL CLUB (The Wasps)

**Secretary:** Matthew Strickland T: 07754 978487

E:secretary@wanboroughwasps.com

Details of Team Managers U7(Year2) to U18(Year 13) at

www.wanboroughwasps.com

### WANBOROUGH HANDBELL RINGERS

Nicky Pullan, 2, The Beanlands, Wanborough. Tel: 790904

### WANBOROUGH SHOW SOCIETY

**Chair:** John Basevi M:07843 510 328

**Show Secretary:** Mike Thompson M: 07768 558799

info@wanboroughshow.org

### WANBOROUGH CRICKET CLUB

**Hon. Sec. :** Andy Thompson, Tel: 01793 852623

### WANBOROUGH TENNIS CLUB

**Hon. Sec.** Melanie Brough 741277 melaniebrough2@gmail.com

**Membership Sec.** Anica Alvarez Nishio -

wanboroughmembers@gmail.com

### WANBOROUGH BOWLS CLUB

**Hon Sec.** Mags Sanders Tel. 01793 614861

info@wanboroughbowlsclub.org.uk

### WANBOROUGH BEER FESTIVAL/THE OLD BOILERS

**Secretary:** Barry Hillier 07443 490019

wanboroughbeerfestival@gmail.com/theoldboilers@gmail.com

### WANBOROUGH VILLAGE HALL

**Lettings Secretary:** Karen Hawkins 07823 490153

E:vvhlettings@gmail.com Hall calendar on Wanborough.info

**Chairperson:** Dion Dean 07841 866773

**Secretary:** Sarah Ingram 07530 451549

### WANBOROUGH PLAYGROUP (Village pre-School)

**Supervisor:** Sarah Ingram, Tel: 07444 352687 (during Playgroup hours)

**Chair of the Committee:** Kayleigh Bizley 07818 432657

wanboroughplaygroup.org.uk

wanboroughplaygroup@hotmail.co.uk

### WANBOROUGH THEATRE CLUB

**Hon. Sec.:** Mrs. D. Rawlings, Tel: 01793 979170

### BISHOPSTONE AND HINTON PARVA WI

**Secretary:** Sue Reade. Tel: 710208

E: sue\_reade@btinternet.com

### BRIDGE CLUB

Jim & Joy Ball, Tel: 790293. (Friday evenings at Hinton Parva Village Hall)

### LIDDINGTON SCOTTISH DANCING GROUP

Linda Clarke. Tel: 790158

Thursday evenings 7.45 – 10pm (September – May at Liddington Village Hall)

### LIDDINGTON VILLAGE HALL

**Hon. Sec.:** Alison Babbington, 10 The Street, Liddington SN4 0HD

**Chairman:** Mr. Matthew Bowman, Meadowbank House, Medbourne

Lane, Liddington SN4 0EY Tel: 791401

matthewbowman56@gmail.com

**Hon. Lettings Sec.:** Sarah Hill, Church Rd, Liddington Tel: 790104.

sarah@jonhill.co.uk

## LOCAL WEBSITES:

**For further information and news from our four**

**villages, visit: [www.liddington.org](http://www.liddington.org) or**

**[www.wanborough.info](http://www.wanborough.info)**

**For Bishopstone and Hinton Parva visit**

**[www.villagenewsletter.org](http://www.villagenewsletter.org)**

## LYDEN MAGAZINE CONTACTS

**Editorial:** Andrea Jerome Tel: 790307  
lydenmagazine@gmail.com

**Advertising:** Lorna Naseem Tel: 07903 210505  
lydenadvertising@gmail.com

**Subscriptions/  
distribution:** lydensubs@gmail.com

**Announcements:** lydenannounce@gmail.com



## Beacon Developments

RELIABILITY - QUALITY - VALUE



specialists in home transformations

- new builds
- extensions
- loft conversions
- listed buildings
- kitchens
- bathrooms
- design & planning
- project management

E: [info@beacondvelop.co.uk](mailto:info@beacondvelop.co.uk) T: **01793 790245** W: [www.beacondvelop.co.uk](http://www.beacondvelop.co.uk)



Est.  
1986

Specialists in village property  
for over 30 years.

Contact us now for your  
free valuation.

01793 618080  
[sales@chappells.uk.com](mailto:sales@chappells.uk.com)  
[lettings@chappells.uk.com](mailto:lettings@chappells.uk.com)



DESIGN  
BUILD  
INTERIORS

CONTACT US FOR A FREE CONSULTATION  
www.no471.com  
hello@no471.com  
07709 899 832

No.471

## PAUL BISHOP

Interior and Exterior Painter and Decorator  
Free Estimates  
Competitive prices

1 Manor View, Liddington  
Call Paul on 790768 / mobile 07770 751275

Chappells   
ESTATE AGENTS

Your Village specialist when it comes to selling or renting. Free valuations and market advice.

**01793 618080**

colin@chappells.uk.com/phil@chappells.com  
www.chappells.uk.com

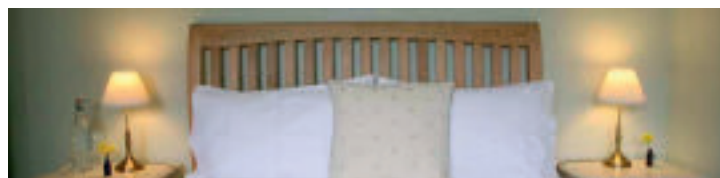
## JUDI MOORE

YOUR WANBOROUGH BASED  
TRAVEL AGENT

FULLY ABTA & ATOL REGISTERED

Call 01793 791238 or email me

judi.moore@thepersonaltravelagents.co.uk



## Meadowbank House

Traditional Bed and Breakfast

Restful and luxurious accommodation in Liddington

01793 791401 www.meadowbankhouse.com

## A & B Domestic Appliances

Guaranteed repairs to washing machines and tumble driers. A genuine professional repair service.

Contact Andrew Matthews at:

E: aandbdomestic@gmail.com

Tel: 01793 536332 Mobile: 07850 665925

11 Farman Close, Eldene, Swindon, SN3 6DP

## The HAIR and TRICHOLOGY Clinic

Treatment of Hair and Scalp Conditions  
NHS & Private Wig Service 01793 741136

**Cameo Hair Salon Ltd**

Private hairdressing rooms available, full PPE

7 High Street, Chiseldon SN4 0NQ

01793 740147

www.hairandtrichology.co.uk

## Mowerfixer

maintenance/repair service mowers,  
hedgecutters trimmers etc for the Ridgeway villages  
New & 2<sup>nd</sup> hand garden machinery for sale

Doug Stevens

0789 979 1833 doug@mowerfixer.co.uk




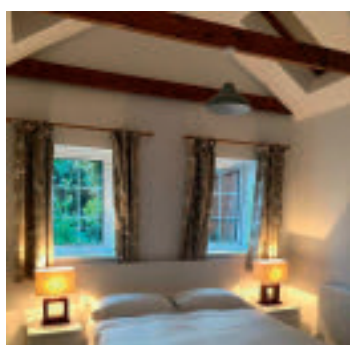
richard  
james

Find me on incentivised.com/rossutton

Wroughton: 01793 814 542

Mobile: 07859 366 130

  
INCENTIVISED.COM  
Real Estate Agents



## The Old Post Office

Beautifully converted  
one bed accommodation.

Available for  
short term rent.

Wanborough, Wiltshire  
07903 210505

# walkies!

of Wanborough



Local Dog Walking  
and Pop-in Pet Care  
Service for when you  
can't be there...

Local Ladies based  
in Wanborough  
Insured  
First Aid Trained  
DBS checked  
with great Wellies!!



Contact: 07501 197793 Email: WalkiesofWanborough@gmail.com